



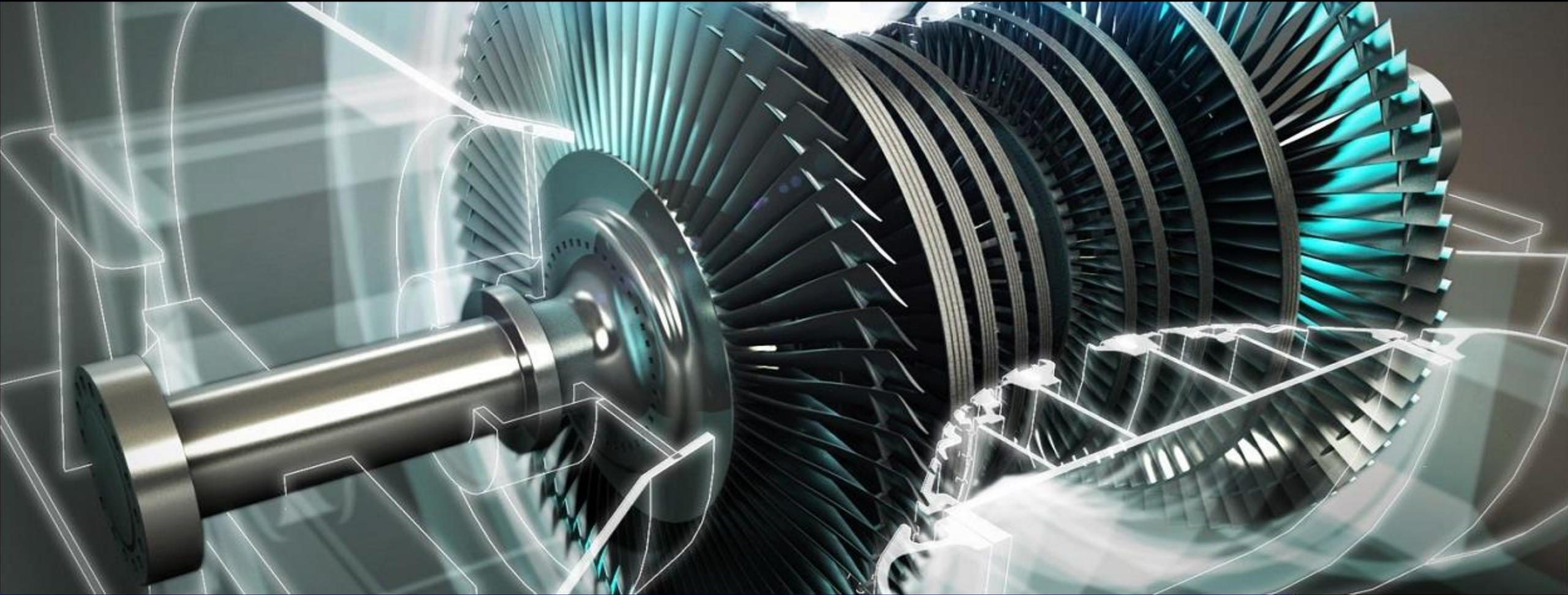
IoT SERVICES FOR CRITICAL ASSETS MANAGEMENT-GENERATORS



[Home](#)

[Projects](#)

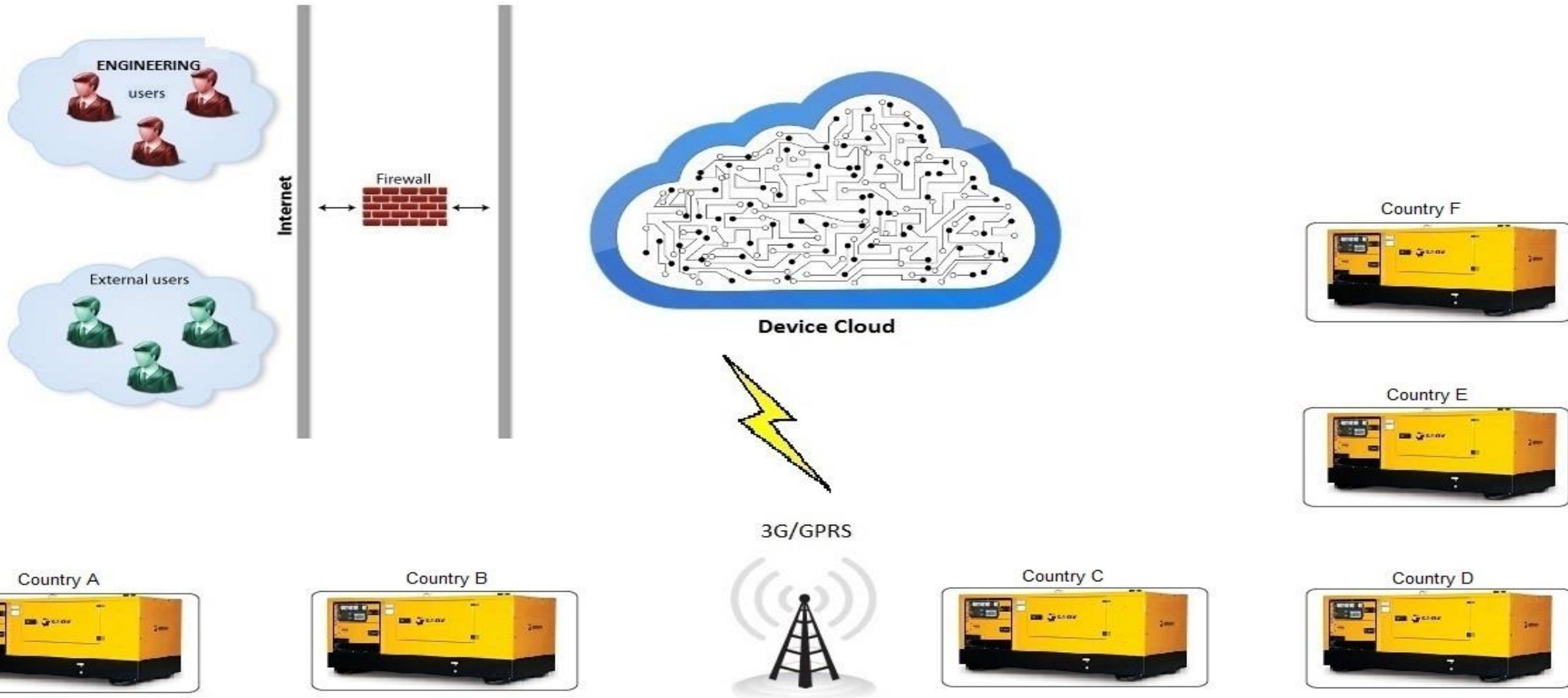
[Alarms](#)



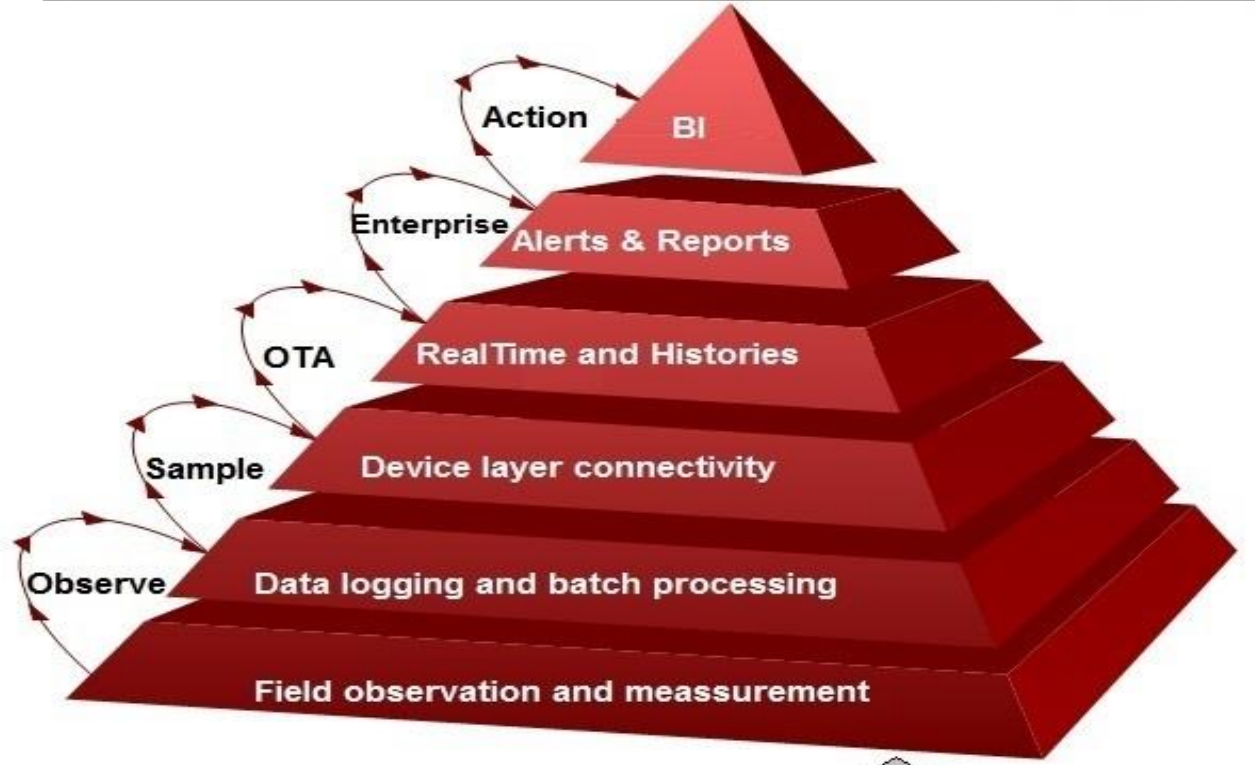
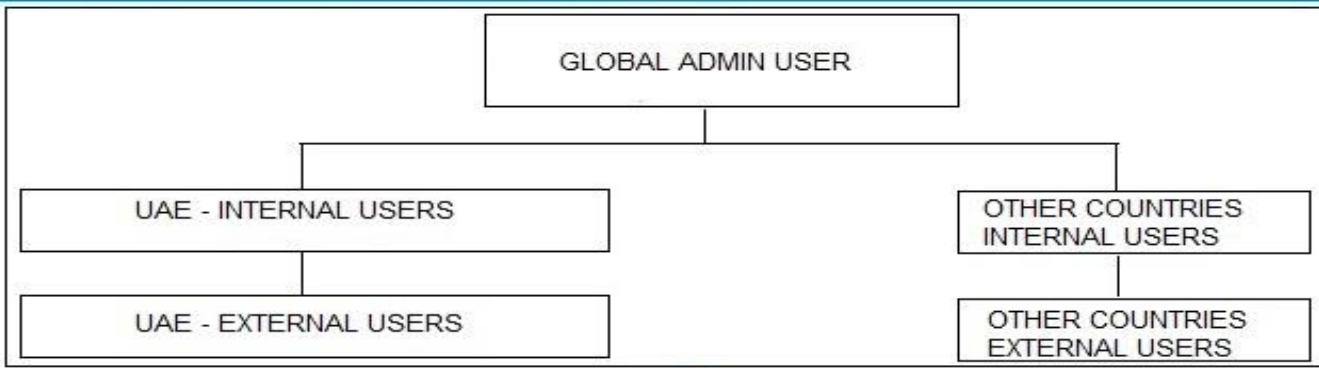
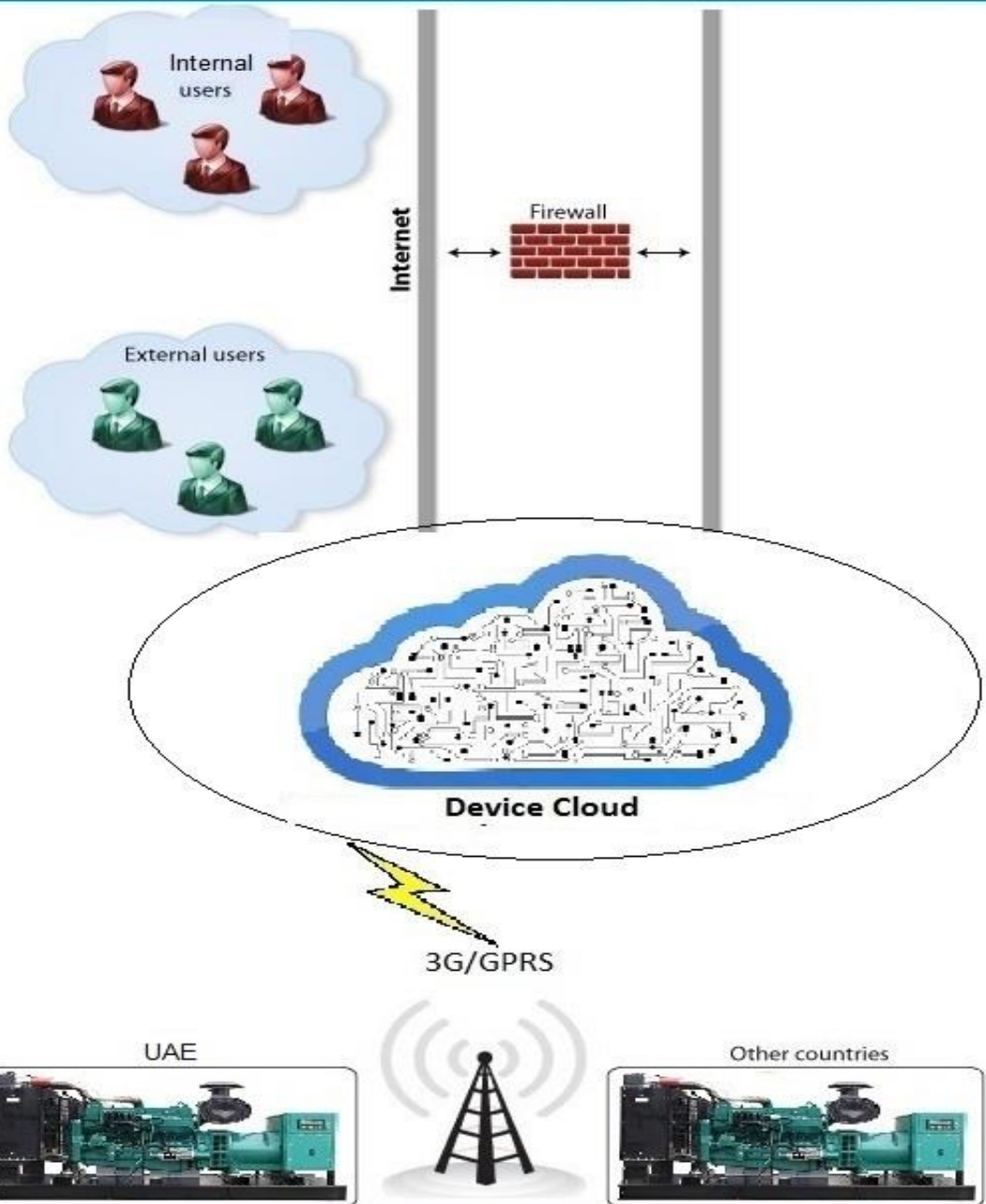
IoT Enabled Generator Monitoring Solution



SMART POWER GENERATOR SERVICES - SYSTEM ARCHITECTURE



REMOTE MONITORING SYSTEM HIERARCHY

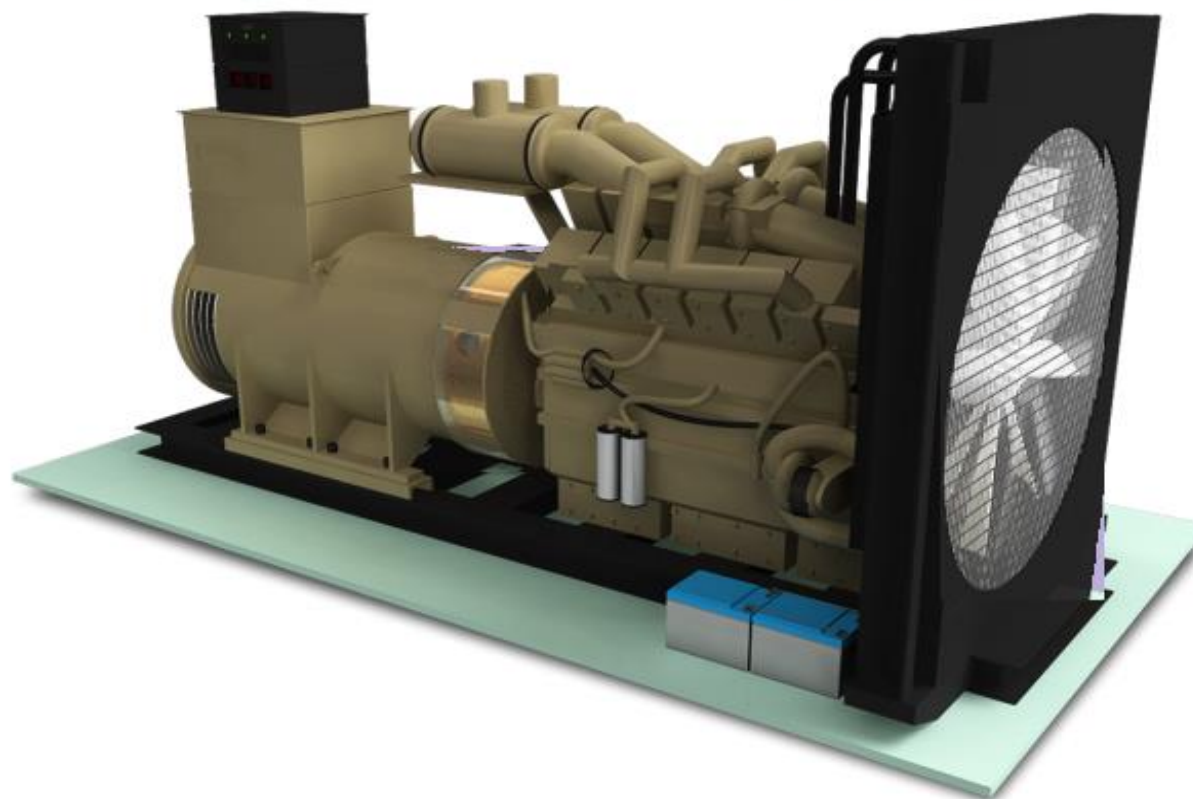


Generator - 1

[Generator View](#)[Point View](#)

Generator

Generator



Unit Status

Running

Room Temperature

25.04 C

Temperature Setpoint

24.0

Generator - 1

[Generator View](#)
[Point View](#)

Generator

GENERAL

Engine Coolant Temp	89.6 °C	■
Engine Oil Pressure	47.3 psi	■
Engine Oil Temp	205.3 °C	■
Engine Speed	1499.5	■
Low Coolant Lvl	Normal	■
Low Fuel Lvl	Normal	■
Battery Voltage	12.9 V	■
Hand Off Auto Status	Auto	■
Engine Run Status	Running	■
Emergency Stop	Inactive	■

CONTROLS

Remote Start	<input type="button" value="START"/>	■
Remote Stop	<input type="button" value="STOP"/>	■
Reset	<input type="button" value="RESET"/>	■

KPI

SPN	110.0	■
FMI	3.0	■
Used Capacity	161.7 kVA	■
Cable Theft Status	Normal	■
Battery Health Status	Healthy	■

ELECTRICAL

R Phase Voltage	231.1 V	■	R Phase kW	28.6 kW	■
Y Phase Voltage	230.3 V	■	Y Phase kW	36.6 kW	■
B Phase Voltage	231.4 V	■	B Phase kW	59.6 kW	■
RY Phase Voltage	441.1 V	■	Total kW	124.7 kW	■
YB Phase Voltage	440.3 V	■	R Phase PF	0.79	■
BR Phase Voltage	441.4 V	■	Y Phase PF	0.75	■
R Phase Current	52.14 A	■	B Phase PF	0.77	■
Y Phase Current	70.41 A	■	System PF	0.77	■
B Phase Current	111.26 A	■	Frequency	49.98 Hz	■

Generator Site 1

Generator

Alarm Console

Time Range ? to ?

Open Alarm Sources

1 Sources / 1 Alarms

Timestamp	Source State	Ack State	Source	Alarm Class	Priority	Message Text	
02-May-17 9:09:29 AM GST	Offnormal	0 Acked / 1 Unacked	Engine_CT	Cummins	255	Coolant temperature High	

Acknowledge

Hyperlink

Notes

Silence

Filter

IoT ENABLED GENERATOR MONITORING SOLUTION

Generator - 1

Generator

GENERAL

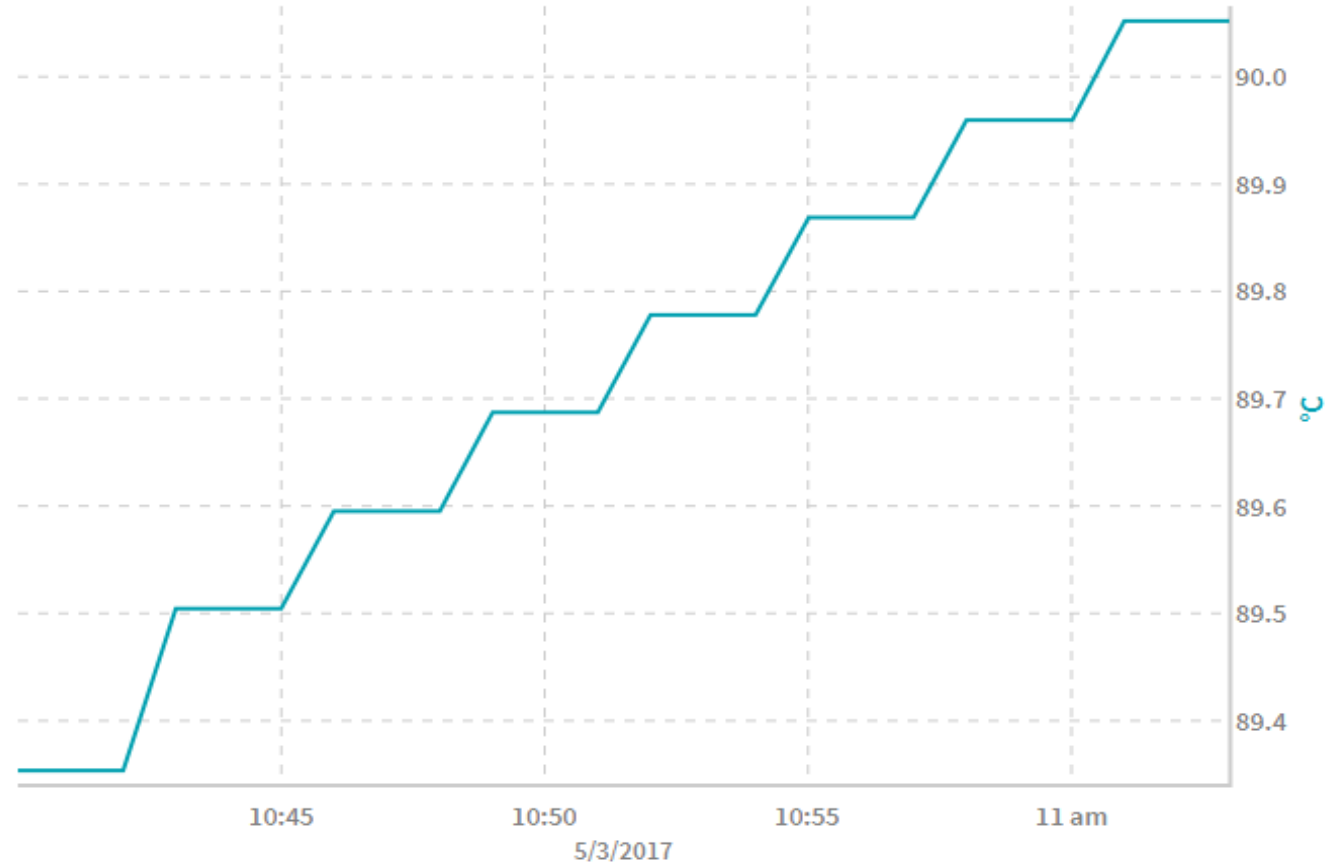
Engine Coolant Temp	90.1 °C	■
Engine Oil Pressure	48.3 psi	■
Engine Oil Temp	206.3 °C	■
Engine Speed	1499.7	■
Low Coolant Lvl	Normal	■
Low Fuel Lvl	Normal	■
Battery Voltage	12.8V	■
Hand Off Auto Status	Auto	■
Engine Run Status	Running	■
Emergency Stop	Inactive	■

4 Pop up

Today

Generator_Engine_CT

Generator_Engine_CT



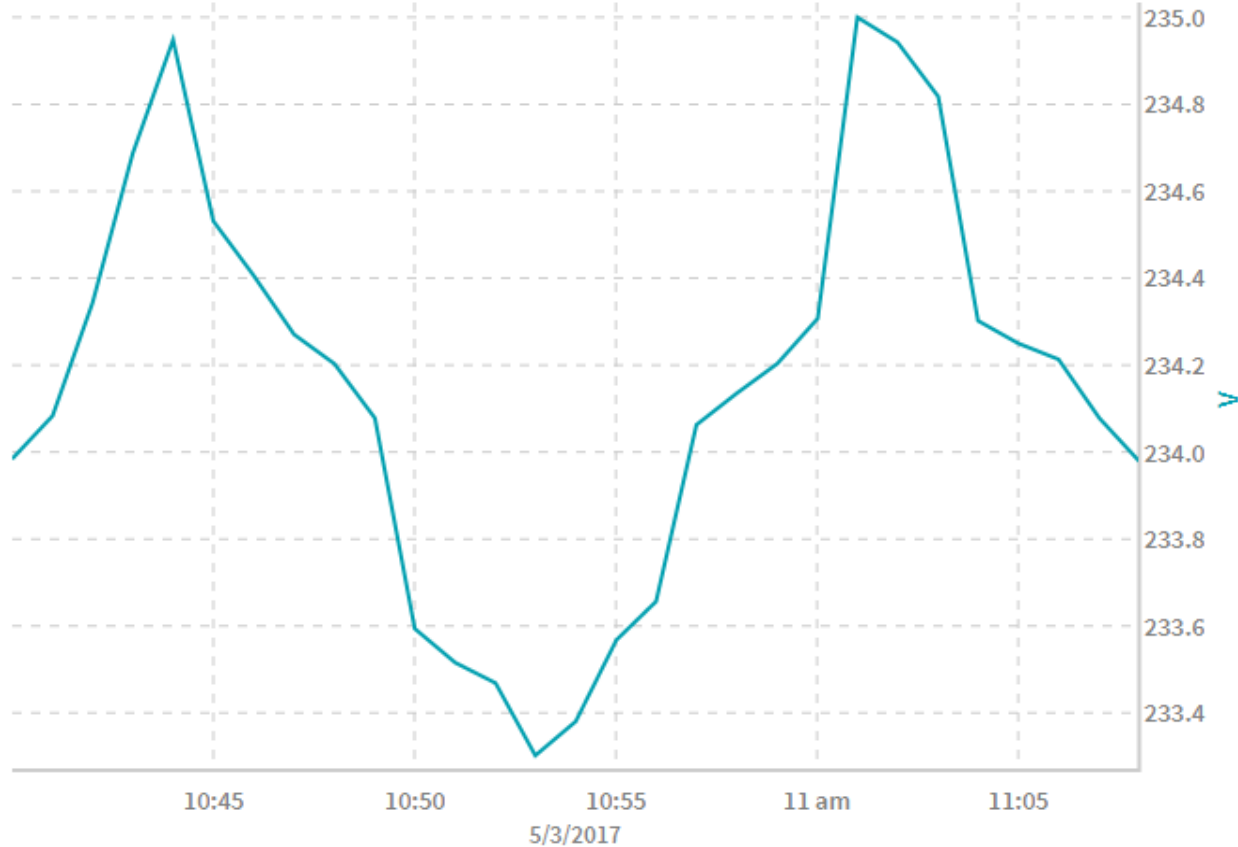
IoT ENABLED GENERATOR MONITORING SOLUTION

4 Pop up

Today

Electrical_Voltage_Phase_R

Electrical_Voltage_Phase_R



Home

Projects

Alarms

Generator View

Point View

ELECTRICAL

R Phase Voltage	232.7V	<input type="checkbox"/>	R Phase kW	31.8 kW	<input type="checkbox"/>
Y Phase Voltage	231.9V	<input type="checkbox"/>	Y Phase kW	39.8 kW	<input type="checkbox"/>
B Phase Voltage	233.7V	<input type="checkbox"/>	B Phase kW	62.8 kW	<input type="checkbox"/>
RY Phase Voltage	442.7V	<input type="checkbox"/>	Total kW	134.4 kW	<input type="checkbox"/>
YB Phase Voltage	441.9V	<input type="checkbox"/>	R Phase PF	0.79	<input type="checkbox"/>
BR Phase Voltage	443.7V	<input type="checkbox"/>	Y Phase PF	0.75	<input type="checkbox"/>
R Phase Current	57.56 A	<input type="checkbox"/>	B Phase PF	0.77	<input type="checkbox"/>
Y Phase Current	76.27 A	<input type="checkbox"/>	System PF	0.77	<input type="checkbox"/>
B Phase Current	116.30 A	<input type="checkbox"/>	Frequency	49.99 Hz	<input type="checkbox"/>